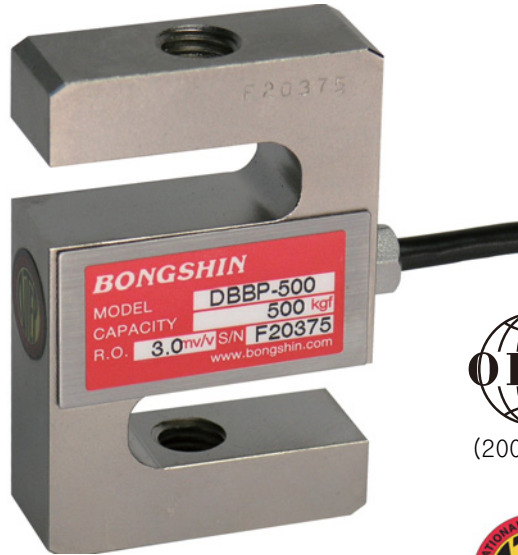


Model DBBP Series

S- Beam Load Cell (20kg ~ 5t)

The DBBP S-beam load cell is designed for industrial scale conversion and a variety of process applications.

- Alloy tool steel construction for high accuracy.
- Electroless nickel plated for corrosion resistance.
- Fully sealed to IP67



(200kg~1t)



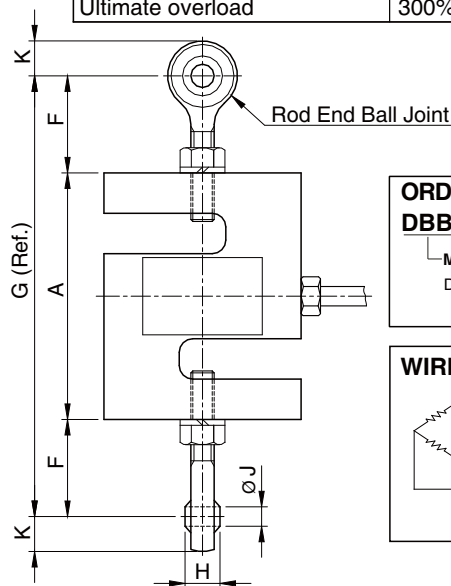
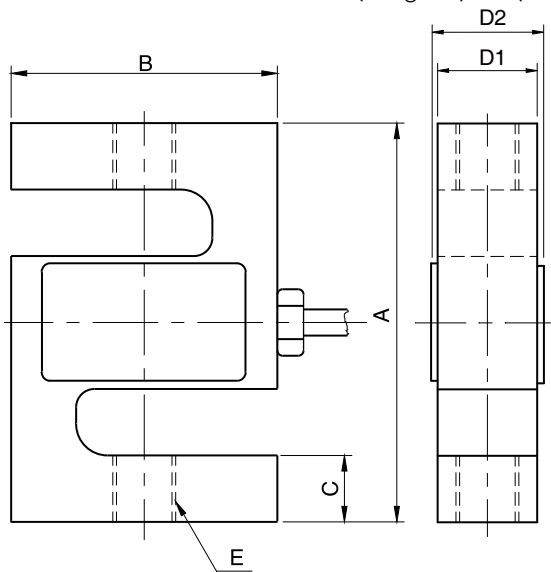
(20kg~5t)



(500kg~5t)

SPECIFICATIONS

| MODEL | DBBP |
|-------------------------------|--|
| Rated capacity (R.C.) | 20, 50, 100, 200, 500kg 1, 2, 3, 5t |
| Rated output(R.O.) | 3.0mV/V ± 0.5% |
| Non-linearity | ≤ 0.03% R.O. |
| Hysteresis | ≤ 0.03% R.O. |
| Non-repeatability | ≤ 0.02% R.O. |
| Creep error | ≤ 0.03% in 20min. |
| Zero balance | ≤ 1% R.O. |
| Compensated temperature range | -10 ~ 70°C |
| Operating temperature range | -20 ~ 80°C |
| Temp. effect on rated output | ≤ 0.02% LOAD/10°C |
| Temp. effect on zero balance | ≤ 0.02% R.O./10°C |
| Terminal input resistance | 350 Ohms ± 3.5 Ohms |
| Terminal output resistance | 350 Ohms ± 5 Ohms |
| Insulation resistance (Min.) | 2000 MOhms at 50V DC |
| Excitation voltage | 3~12V(Recommended), 15V(Max.) |
| Electrical connection | ∅5mmx3m(22AWG x 4Core Shielded) |
| Protection class | meets IP 67 |
| Safe overload | 150% R.C |
| Ultimate overload | 300% R.C |



| ORDERING INFORMATION | |
|----------------------|--|
| DBBP - 5T | |
| MODEL DBBP | CAPACITY 20, 50, 100, 200, 500kg 1, 2, 3, 5ton |

| WIRING INFORMATION | |
|--------------------|--|
| | RED : EXC. (+) GREEN : SIG. (+) WHITE : EXC. (-) BLUE : SIG. (-) BARE : GND. |

Dimension-mm

| Rated Capacity | A | B | C | D1 / D2 | E | F | G | H | J | K | Rod End Ball Joints | Weight(kg) |
|-----------------------------|-------|------|------|-------------|-----------|----|-------|----|----|----|---------------------|------------|
| 20~100kg (196.1 ~ 980.7N) | 63.5 | 50.8 | 10.4 | 12.7 / 19.0 | M6x1P | 25 | 113.5 | 9 | 6 | 9 | SRDB 1 | 0.40 |
| 200, 500kg (1.961, 4.903kN) | 76.2 | 50.8 | 12.7 | 19.0 / 25.0 | M12x1.75P | 41 | 158.2 | 16 | 12 | 16 | SRDB 2 | 0.55 |
| 1t (9.807kN) | 76.2 | 50.8 | 16.0 | 25.4 / 28 | M12x1.75P | 41 | 158.2 | 16 | 12 | 16 | SRDB 2 | 0.73 |
| 2t (19.61kN) | 108.0 | 76.2 | 20.0 | 32.0 / 34.6 | M20x1.5P | 55 | 218 | 25 | 20 | 23 | SRDB 3 | 1.70 |
| 3, 5t (29.42, 49.03kN) | 120.7 | 88.9 | 22.1 | 32.0 / 34.6 | M24x2P | 55 | 230.7 | 28 | 22 | 32 | SRDB 4 | 2.10 |

* Specifications are subject to change without notice

APR, 2018

BONGSHIN LOADCELL CO., LTD.

55, Seobuk-ro, Gajang Ind. Complex, Osan-si, Korea / 18103
 TEL : 82-31-742-6661 www.bongshin.com
 FAX : 82-31-742-6664 E-mail : loadcell@bongshin.com

深圳市现代豪方仪器仪表科技有限公司 0755-26738591