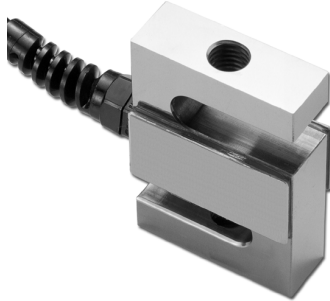


S-Type Load Cell



FEATURES

- Capacities: 25 to 5000kg, 250 to 40Klb
- Alloy steel construction
- Stainless steel available
- Bi-direction(tension/compression)
- Rationalized output
- NTEP Class III 5000S, III L10000 approval from 250lb to 20Klb

OPTIONAL FEATURE

- FM approval available

DESCRIPTION

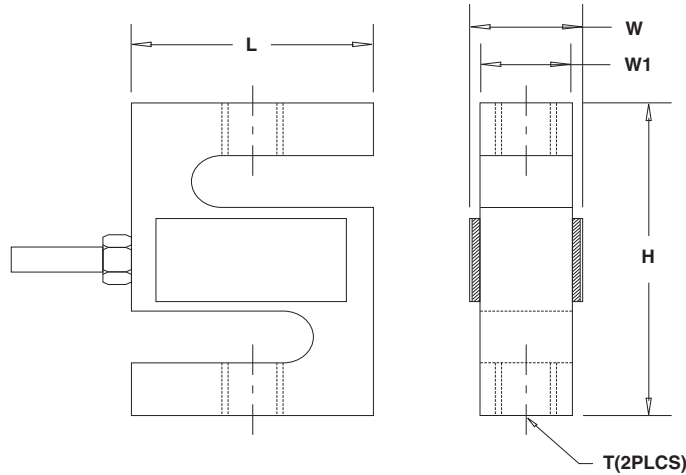
S Type load cell as the name indicated can be easily identified by S-shaped body. They can be loaded either in tension or compression, and used for single or multiple-cell application if the output is rationalized.

STC is made of alloy or stainless steel, sealed to IP67 providing excellent protection against moisture and humidity.

APPLICATIONS

- Electro-mechanical conversion scales
- Silo/hopper/tank weighing
- Crane scales
- Fork-lift scales
- Dosing/filling
- Universal material tester
- Tensile/pulling force measurement

OUTLINE DIMENSIONS



Wiring diagram

- + Excitation Red
- Excitation Black
- + Signal Green
- Signal White

CAPACITY		L	W	W1	H	T
25/50/75kg	mm	50.8	26.7	12.7	63.5	M6 x 1.0
	(inch)	2.00	1.05	0.50	2.50	
100/150kg	mm	50.8	22.92	19.1	76.2	M10 x 1.5
	(inch)	2.00	0.9	0.75	3.00	
250/300lb	mm	50.8	26.7	12.7	76.2	3/8-24UNF
	(inch)	2.00	1.05	0.50	3.00	
250kg 500/750lb	mm	50.8	30.4	19.1	76.2	M12 x 1.75
	(inch)	2.00	1.2	0.75	3.00	1/2-20UNF
500/750kg	mm	50.8	25.4	19.1	76.2	M12 x 1.75
	(inch)	2.00	1.00	0.75	3.00	
1K/1.5Klb	mm	50.8	26.1	19.1	76.2	1/2-20UNF
	(inch)	2.00	1.03	0.75	3.00	
1000/1500kg 2K/2.5K/3Klb	mm	50.8	31.8	25.4	76.2	M12 x 1.75
	(inch)	2.00	1.25	1.00	3.00	1/2-20UNF
5K/7.5Klb	mm	76.2	31.8	25.4	107.9	3/4-16UNF
	(inch)	3.00	1.25	1.00	4.25	
2000/2500/5000kg	mm	76.2	38.1	31.8	100.4	M20 x 1.5
	(inch)	3.00	1.50	1.25	3.95	
10Klb	mm	88.9	31.8	25.4	120.7	3/4-16UNF
	(inch)	3.50	1.25	1.00	4.75	
15Klb	mm	101.6	38.1	31.8	139.7	1-14UNS
	(inch)	4	1.50	1.25	5.50	
20Klb	mm	127	55.7	50.8	177.8	1 1/4-12UNF
	(inch)	5	2.19	2	7.00	
40Klb	mm	152.4	69.9	63.5	254.0	1 1/2-12UNF
	(inch)	6.00	2.75	2.50	10.00	

SPECIFICATIONS

PARAMETER	VALUE		UNIT
	NTEP III & IIL	Non-Approved	
NTEP/OIML Accuracy class	III 5000 single*	2000	
Maximum no. of intervals (n)	IIL 10000 single*	5000	Maximum available
$Y = E_{max}/V_{min}$	10000		
Standard capacities (E_{max})	25, 50, 75, 100, 250, 500, 750, 1000, 1500, 2000, 2500, 5000		kg
Standard capacities (E_{max})	250, 300, 500, 750, 1K, 1.5K, 2K, 2.5K, 3K, 5K, 7.5K, 10K, 15K, 20K, 40K		lbs
Rated output-R.O.	3.0		mV/V
Rated output tolerance	0.25		±% of rated output
Zero balance	1		±% of rated output
Non linearity	0.020	0.020 (SS: 0.05)	±% of rated output
Hysteresis	0.020	0.020 (SS: 0.05)	±% of rated output
Non-repeatability	0.020		±% of rated output
Creep error (20 minutes)	0.030		±% of rated output
Zero return (20 minutes)	0.030		±% of rated output
Temperature effect on min. dead load output	0.0015	0.0026	±% of rated output/°C
Temperature effect on sensitivity	0.0010	0.0015	±% of applied load/°C
Compensated temperature range	-10 to +40		°C
Operating temperature range	-20 to +60		°C
Safe overload	150		% of R.C.
Ultimate overload	300		% of R.C.
Excitation, recommended	10		Vdc or Vac rms
Excitation, maximum	15		Vdc or Vac rms
Input impedance	385±5		Ohms
Output impedance	350±3		Ohms
Insulation resistance	>5000		Mega-Ohms
Construction	Nickel plated alloy steel**		
Environmental protection	IP67		

* Capacities 250-20Klbs

** Stainless steel available

All specifications listed subject to change without notice.

FM Approval

Intrinsically Safe: Class I, II, III; Div. 1 Groups A-G

Non-Incendive: Class I; Div. 2 Groups A-D