

## Model CBFS Series

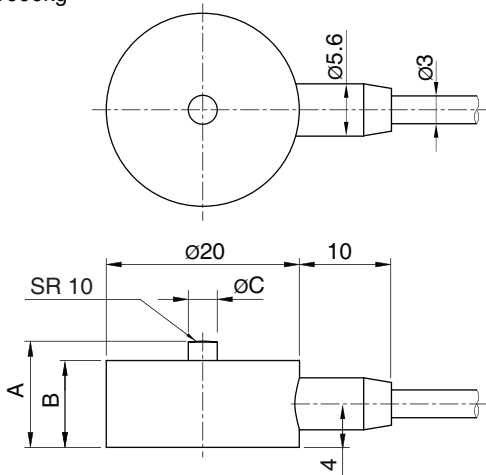
Compression

Miniature Load Cell(3kg ~ 1000kg)



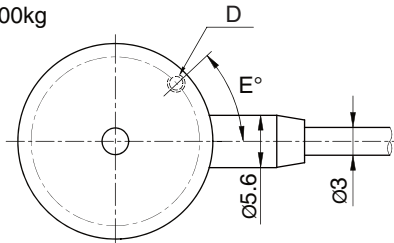
### TYPE - A

3~1000kg



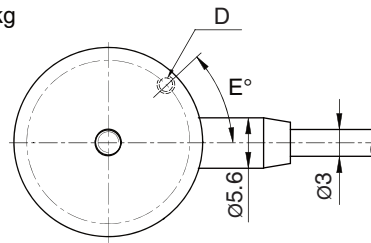
### TYPE - B

3~1000kg

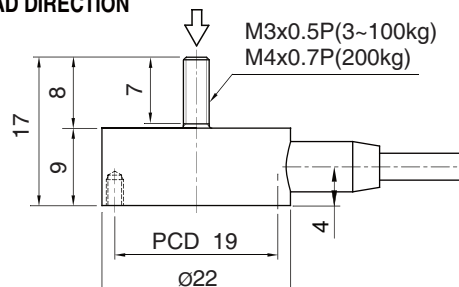
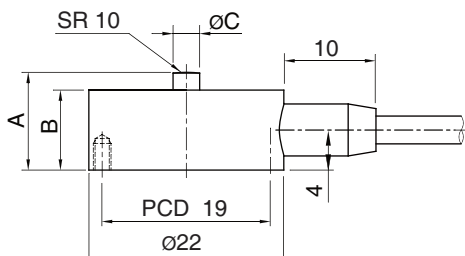


### TYPE - C

3~200kg



LOAD DIRECTION



The model CBFS miniature type is designed for low profile compression service.

Its capacities range from 3kg to 1000kg and it comes complete with 1.5m of load cell cable.

- low profile
- Rated output (1mV/V)
- Protection class IP65

### SPECIFICATIONS

MODEL	CBFS	
Rated capacity (R.C.)	3, 5kg	10, 20, 30, 50, 100, 200, 300, 500, 1000kg
Rated output(R.O.)	1.0mV/V(App.)	1.0mV/V±1%
Material	Stainless steel	
Non-linearity	≤1% R.O.	≤0.5% R.O.
Hysteresis	≤1% R.O.	≤0.5% R.O.
Non-repeatability	≤1% R.O.	≤0.5% R.O.
Creep error	≤0.5% in 20min.	
Zero balance	≤1% R.O.	
Compensated temperature range	-10 ~ 70°C	
Operating temperature range	-20 ~ 80°C	
Temp. effect on rated output	≤0.5% LOAD/10°C	
Temp. effect on zero balance	≤0.2% R.O./10°C	
Terminal input resistance	350 Ohms ± 10 Ohms	
Terminal output resistance	350 Ohms ± 5 Ohms	
Insulation resistance (Min.)	2000 MOhms at 50V DC	
Excitation voltage	5V(Recommended), 10V(Maximum)	
Electrical connection	3mmx1.5m(28AWG x 4C Shielded)	
Protection class	meets IP 65	
Safe overload	150% R.C	
Ultimate overload	300% R.C	

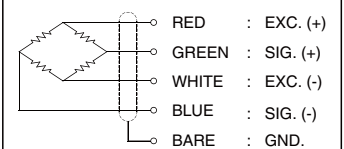
Capacity	A	B	C	D	E°
3~100 kg	11	9	3	3-M2.5x0.45P	60°
200~500 kg	11	10	4	4-M2.5x0.45P	45°
1000 kg	14	13	4	4-M2.5x0.45P	45°

### ORDERING INFORMATION

#### CBFS - 10

MODEL	CAPACITY
CBFS A	3kg~1000kg
CBFS B	3kg~1000kg
CBFS C	3kg~200kg

### WIRING INFORMATION



\* Specifications are subject to change without notice

FEV, 2016

MODERN HERO TECHNOLOGIES (SHENZHEN) CO., LTD

TEL : 0086-755-26738591

FAX : 0086-755-26738591

<https://www.octsensor.com/>

E-mail : sales@octsources.com

深圳市现代豪方仪器仪表科技有限公司 0755-26738591