



FEATURES

- Capacities 500 to 20k lbs, 250 to 5000 kg
- SQB-SS stainless steel construction
- High side-load tolerance
- Electroless nickel-plated-alloy tool steel
- NTEP Class III 5000M for SQB, SQB-F and SQB-SS available from 1k to 10k lbs

OPTIONAL FEATURE

- FM approval available

DESCRIPTION

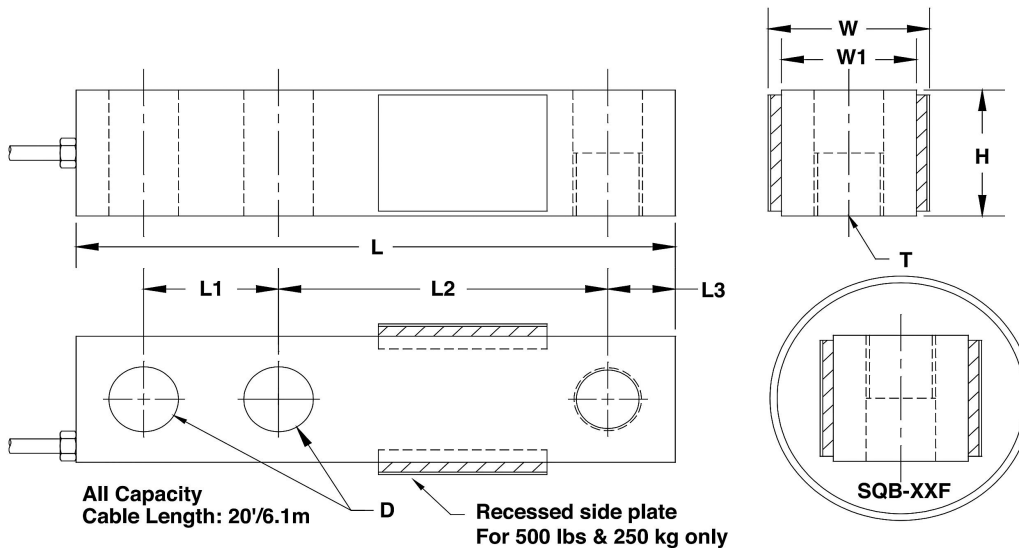
SQB is a single-ended shear beam load cell designed for multiple cell applications such as low profile platform or small tank scales when used with proper mounting

accessories. It is insensitive to side loading and capable of reversed loading. SQB and SQB-F are constructed of alloy steel and fully potted with special chemical compounds to IP67 to protect the cell from water and moisture damage.

APPLICATIONS

- Truck/rail scales
- Silo/hopper/tank weighing
- Platform scales (multiple load cells)
- Pallet truck scales
- Packaging machines

OUTLINE DIMENSIONS in mm



Wiring diagram
 + Excitation Red
 - Excitation Black
 + Signal Green
 - Signal White

| CAPACITY | | L | L ₁ | L ₂ | L ₃ | W | W ₁ | H | D | T |
|---------------------------|--------|-------|----------------|----------------|----------------|------|----------------|------|------|------------|
| 250 kg | mm | 130.0 | 25.4 | 76.2 | 12.7 | 31.7 | 31.7 | 25.4 | 13.5 | M12 x 1.75 |
| 500 lbs | (inch) | 5.12 | 1.00 | 3.00 | 0.50 | 1.25 | 1.25 | 1.00 | 0.53 | 1/2-20UNF |
| 500/1000/1500/2000 kg | mm | 130.0 | 25.4 | 76.2 | 12.7 | 38.1 | 31.7 | 31.7 | 13.5 | M12 x 1.75 |
| 1k/2k/2.5k/3k/4k/5kSE lbs | (inch) | 5.12 | 1.00 | 3.00 | 0.50 | 1.50 | 1.25 | 1.25 | 0.53 | 1/2-20UNF |
| 2500/5000 kg | mm | 171.5 | 38.1 | 95.3 | 19.0 | 44.2 | 38.1 | 38.1 | 19.8 | M20 x 1.5 |
| 5k/10k lbs | (inch) | 6.75 | 1.50 | 3.75 | 0.75 | 1.74 | 1.50 | 1.50 | 0.78 | 3/4-16UNF |
| 15k/20k lbs | mm | 225.6 | 50.8 | 123.9 | 25.4 | 56.9 | 50.8 | 50.8 | 26.2 | ----- |
| | (inch) | 8.88 | 2.00 | 4.88 | 1.00 | 2.24 | 2.00 | 2.00 | 1.03 | 1-14UNS |

All dimensions in mm



SPECIFICATIONS

| PARAMETER | VALUE | | UNIT |
|---|---|------------------|-----------------------|
| | NTEP III & IIIL | Non-Approved | |
| NTEP/OIML accuracy class | NTEP III & IIIL | Non-Approved | |
| Maximum no. of intervals (n) | 3000 single ¹ 5000 multiple ¹ | 1000 | |
| Y = Emax/Vmin | 10000 | 5000 | Maximum available |
| Standard capacities (Emax) (Aluminum) | 250, 500, 1000, 1500, 2000, 2500, 5000 | | kg |
| Standard capacities (Emax) (Steel) | 500, 1k, 2k, 2.5k, 3k, 4k, 5kSE, 5k, 10k, 15k, 20k | | lbs |
| Rated output—R.O. | 3.0 | | mV/V |
| Rated output tolerance | 0.25 | | ±% of rated output |
| Zero balance | 1 | | ±% of rated output |
| Non-linearity | 0.025 | 0.030 (SS: 0.05) | ±% of rated output |
| Hysteresis | 0.025 | 0.030 (SS: 0.05) | ±% of rated output |
| Non-repeatability | 0.020 | 0.020 | ±% of rated output |
| Creep error (20 minutes) | 0.025 | 0.030 | ±% of rated output |
| Zero return (20 minutes) | 0.025 | 0.030 | ±% of rated output |
| Temperature effect on min. dead load output | 0.0017 | 0.0026 | ±% of rated output/°C |
| Temperature effect on sensitivity | 0.0010 | 0.0015 | ±% of rated output/°C |
| Compensated temperature range | -10 to +40 | | °C |
| Operating temperature range | -20 to +60 | | °C |
| Safe overload | 150 | | % of R.C. |
| Ultimate overload | 300 | | % of R.C. |
| Excitation, recommended | 10 | | VDC or VAC RMS |
| Excitation, maximum | 15 | | VDC or VAC RMS |
| Input impedance | 385±5 | | Ohms |
| Output impedance | 350±3 | | Ohms |
| Insulation resistance | >5000 | | Mega-Ohms |
| Construction | Nickel-plated alloy steel ² | | |
| Environmental protection | IP67 | | |

Notes:

(1) Capacities 1k–10k lbs

(2) Stainless steel available

All specifications subject to change without notice.

FM Approval

Intrinsically Safe: Class I, II, III; Div. 1 Groups A-G

Non-Incendive: Class I; Div. 2 Groups A-D